



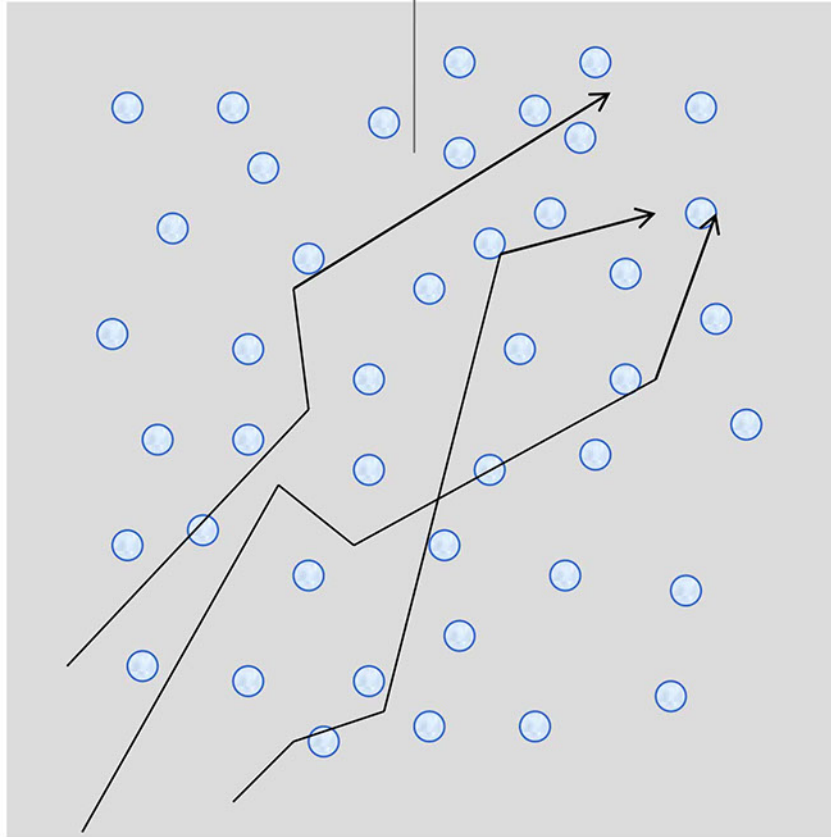
# PRIVACY GLASS

**Roxy**glass

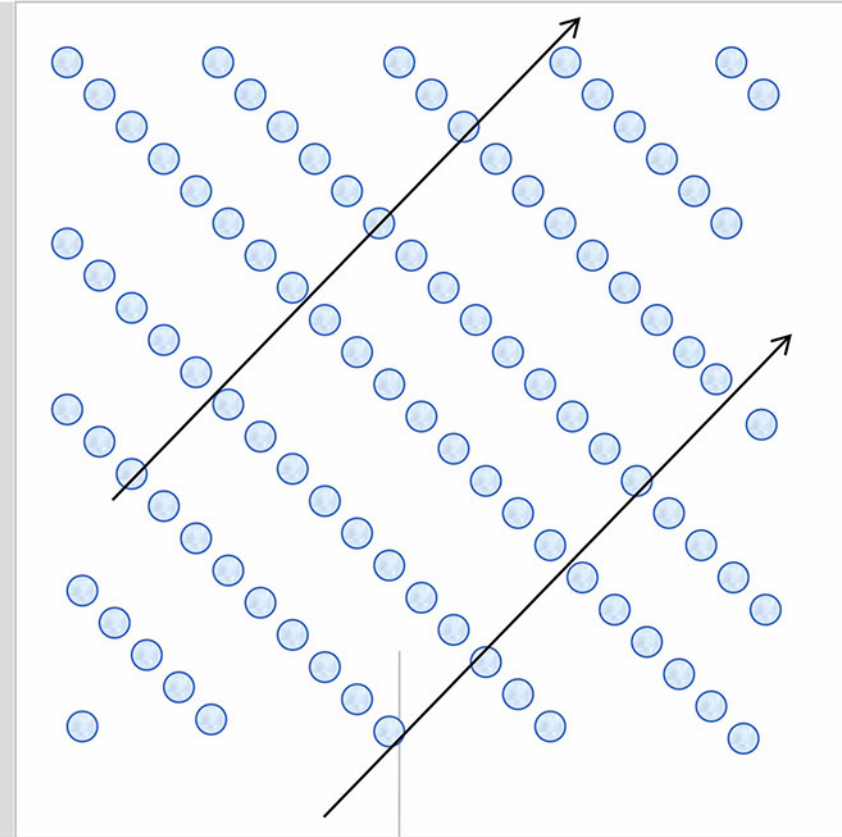
# **Roxyglass** **Privacy Glass / Film**

- **Leading brand in the switchable glass industry**
- **Manufactured in the U.S. by Polytronix, Inc.**
- **Low-voltage available**
- **Best VLT/low haze**
- **Excellent viewing angle**
- **Largest size**
- **Quality guaranteed**

Power **OFF**



The liquid crystal molecules line up,  
the incident light passes through,  
and the Privacy Glass looks Clear



The liquid crystal molecules are  
randomly oriented and scatters incident light,  
making the Privacy Glass Opaque.

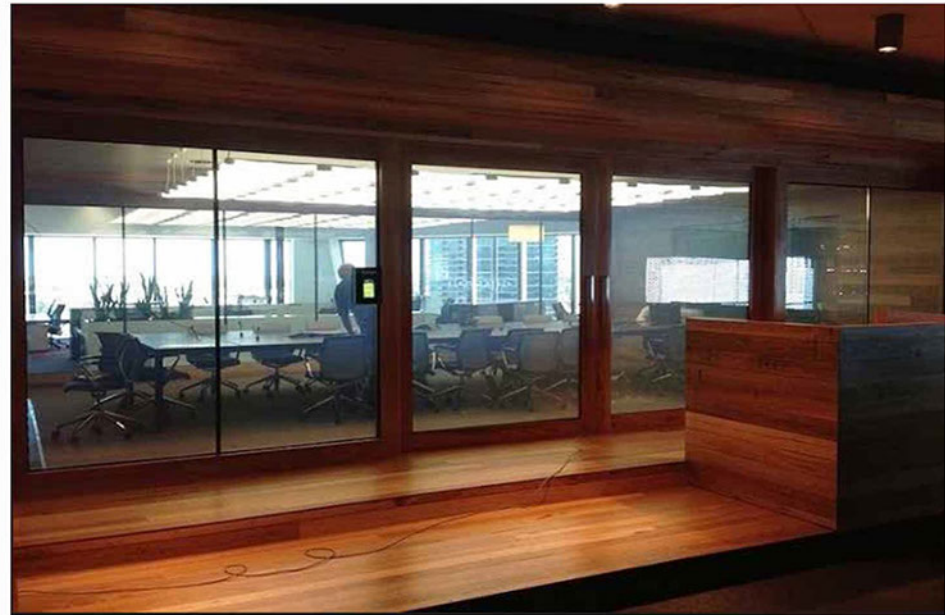
Power **ON**

Roxyglass Switchable Privacy Glass

# CONFERENCE ROOM



On a modern but practical point of view, a remote controller combination offers the host an easy and high tech control mode from a distance.





Roxyglass Switchable Privacy Glass



# CONFERENCE ROOM

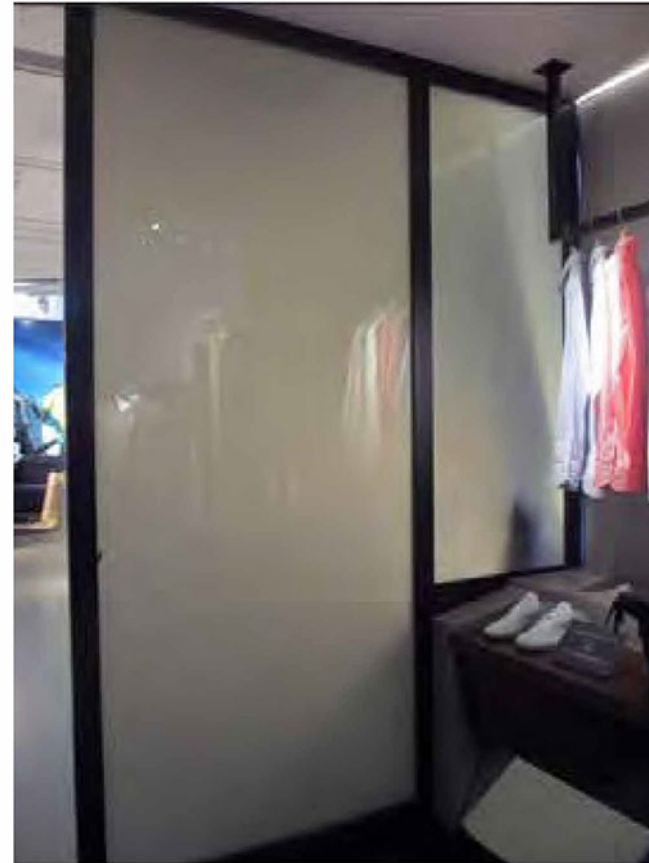
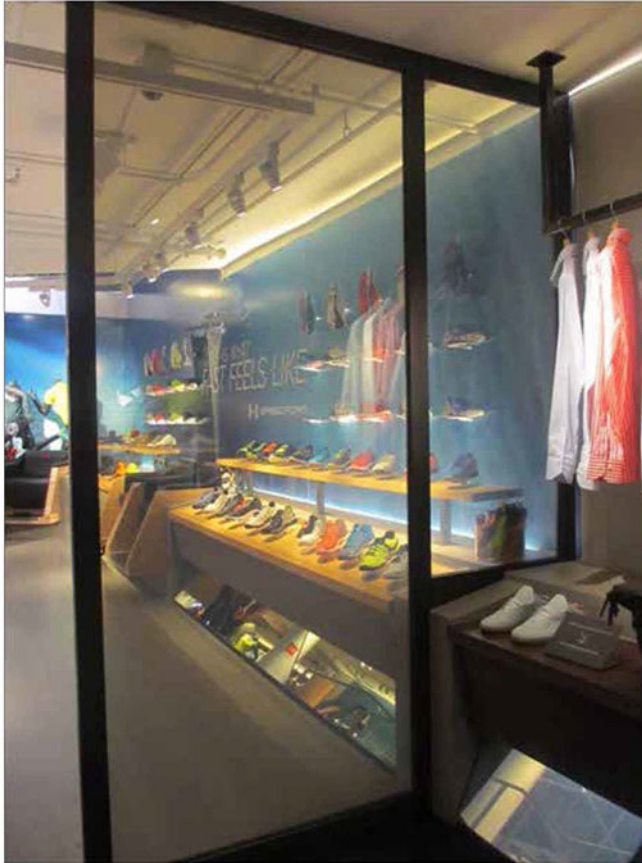


**Focus on the public and private areas. Just utilize your space by yourself. Create the best space to work.**

Roxyglass Switchable Privacy Glass



# FITTING ROOM



**A unique booth attracts more attendees, which results in better sales opportunities.**

Roxyglass Switchable Privacy Glass

# HIGH SPEED TRAIN & MRT



Roxyglass Switchable Privacy Glass



# YACHT APPLICATIONS





Roxyglass Switchable Privacy Glass

# RESIDENTIAL ENCLOSURE



**No more distracting shutters and drapes bring us dust and bacteria.**

Roxyglass Switchable Privacy Glass



# LIVING ROOM ENCLOSURE



**Maximize and transform a tiny space but still maintain your privacy.**

Roxyglass Switchable Privacy Glass



# SHOWER ROOM ENCLOSURE



# Privacy Glass

## Film/Glass

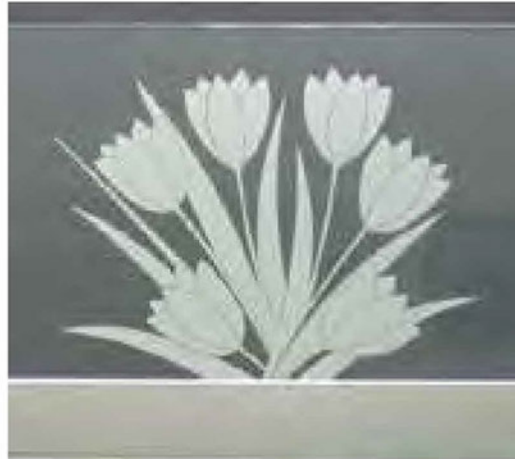
Controllable Privacy

partially  
dynamical  
switch



# CUSTOMIZED PATTERN

You can have more choices on designs or present your unique ideas through Privacy Glass Film/Glass.



**\*Patent technique can partialy dynamical switch**

## CUSTOMIZED PATTERN

You can have more choices on designs or present your unique ideas through Privacy Glass Film/Glass.



**\*Patent technique can partialy dynamical switch**

# Privacy Glass

A special, patented technology that incorporates Leds, light sources or electronic devices into glass panels to create distinctive patterns, image, even digital advertising.

It serves as an excellent promotional tool in creating attention-getting displays.

**Roxy**glass



# TAIWAN HIGH SPEED RAIL

## LIUJIA Station

A bamboo pattern has been incorporated into Privacy Glass which symbolizes thriving, rising and promising!

Bright high performing LED/light sources can save energy and create an attractive display.

It can be used effectively for outdoor and curved applications because all circuits are laminated in glass to keep moisture away.





# NIKE TECH BUTTERFLY

## Create the unique brand-image!

It gives a vision effect of futuristic which is exactly the unique point of the product.

It would be the most attractive to the human eye with the use of these five colors, Yellow, Red, Blue, Green and White.



# NIKE TECH BUTTERFLY

## Create the unique brand-image!

It gives a vision effect of futuristic which is exactly the unique point of the product.

It would be the most attractive to the human eye with the use of these five colors, Yellow, Red, Blue, Green and White.



# NIKE TECH BUTTERFLY

## Create the unique brand-image!

It gives a vision effect of futuristic which is exactly the unique point of the product.

It would be the most attractive to the human eye with the use of these five colors, Yellow, Red, Blue, Green and White.







# NIKE TECH BUTTERFLY

## Create the unique brand-image!

It gives a vision effect of futuristic which is exactly the unique point of the product.

It would be the most attractive to the human eye with the use of these five colors, Yellow, Red, Blue, Green and White.





Roxyglass Switchable Privacy Glass



# SHISEIDO Cosmetics

**Create the unique brand-image!**

As SHISEIDO's image on each front counter all over the world.

It would be the most attractive to the human eye with the use of these five colors, Yellow, Red, Blue, Green and White.



# SHISEIDO Cosmetics

## Create the unique brand-image!

As SHISEIDO's image on each front counter all over the world.

It would be the most attractive to the human eye with the use of these five colors, Yellow, Red, Blue, Green and White.





Roxyglass Switchable Privacy Glass

# POLA Cosmetics

**Create the unique brand-image!**

As POLA's image on each front counter all over the world.

It would be the most attractive to the human eye with the use of these five colors, Yellow, Red, Blue, Green and White.



Roxyglass Switchable Privacy Glass

# LANCÔME Cosmetics

**Create the unique brand-image!**

As LANCÔME's image on each front counter all over the world.

It would be the most attractive to the human eye with the use of these five colors, Yellow, Red, Blue, Green and White.





Roxyglass Switchable Privacy Glass

# LANCOME Cosmetics

**Create the unique brand-image!**

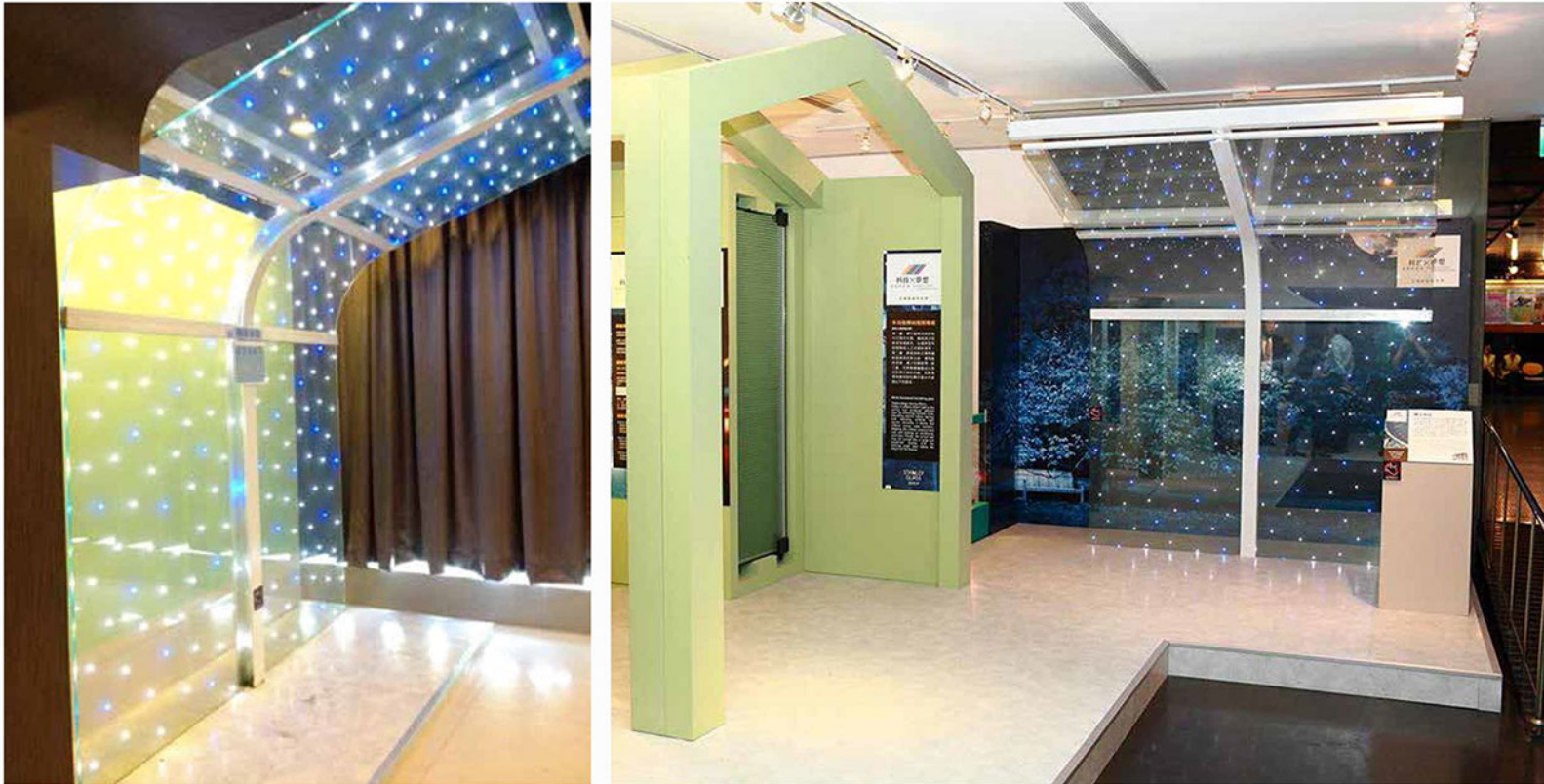
As LANCOME's image on each front counter all over the world.

It would be the most attractive to the human eye with the use of these five colors, Yellow, Red, Blue, Green and White.



Roxyglass Switchable Privacy Glass

# BUS STATION



It offers the public powerful experiences with art and technology in urban environment.



Roxyglass Switchable Privacy Glass



# GHIRARDELLI

The Historical & Famous Chocolate Company

## Excellent Display Promotional Tool!

A research shows compared with other lighting sources, LEDs not only provide better performance and brightness but also saves energy.

Roxyglass combines art and lighting to an unique application. It always catches people's eyes in the first second!





Roxyglass Switchable Privacy Glass



# VIP ROOM

**Build the connection with your customers is your job!**



# Roxyglass

## LED Moving Display Glass

- Product extension from Privacy Glass
- Can be utilized as a huge size screen on facade with moving **text, logo, images and other effects**
- **Two standard sizes:**  
750mm(W)x2250mm(H) & 1000mm(W)x2000mm(H) (Combination is available)
- **Customized size** is available for bulk quantity



Jhumong Bridge in Taiwan





Elevator at Commercial Building

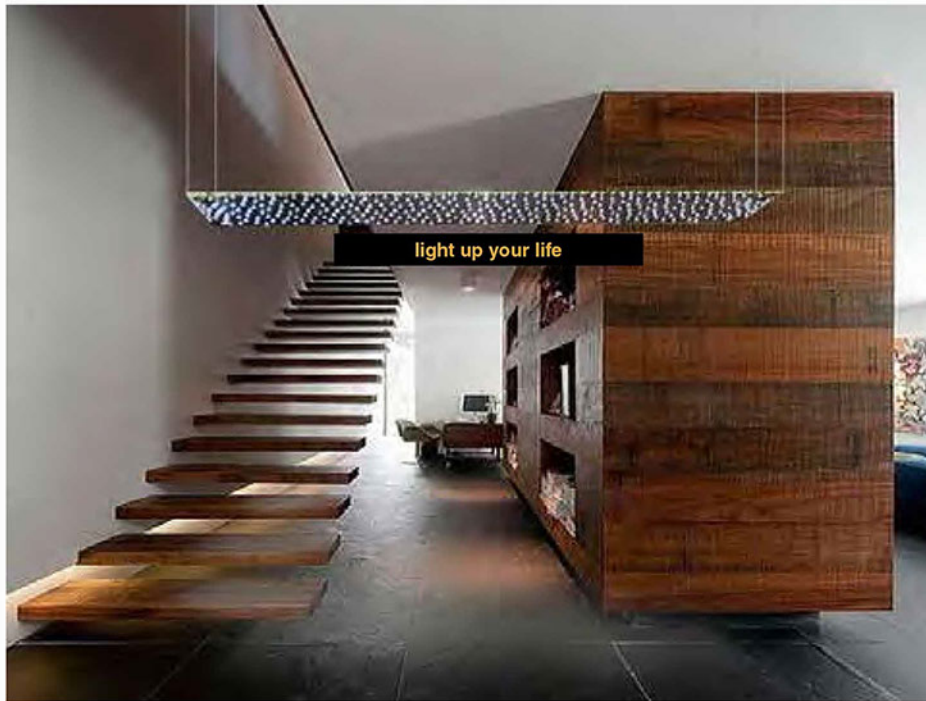


## Escalator at Supermarket

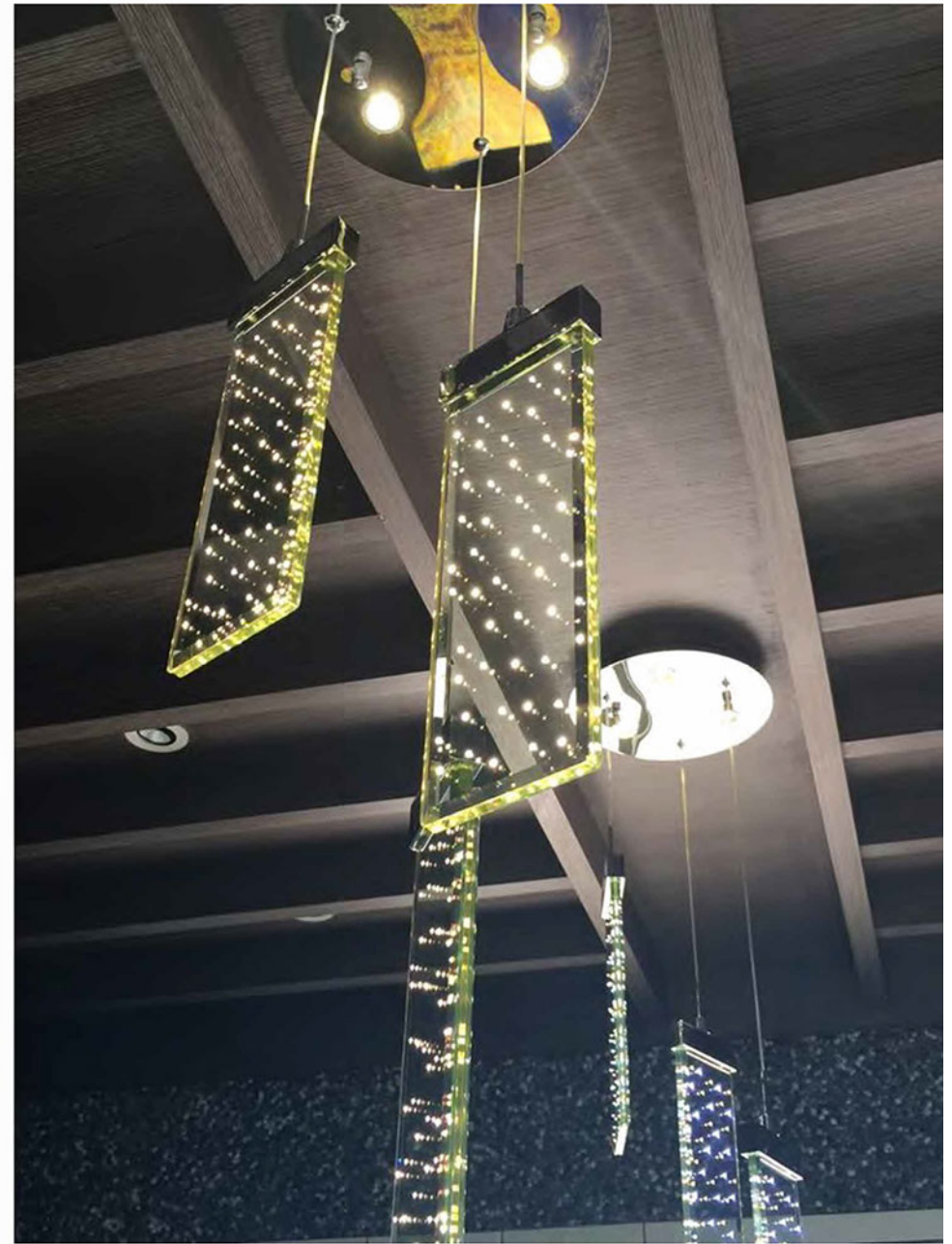


# Roxyglass

## LED Lighting

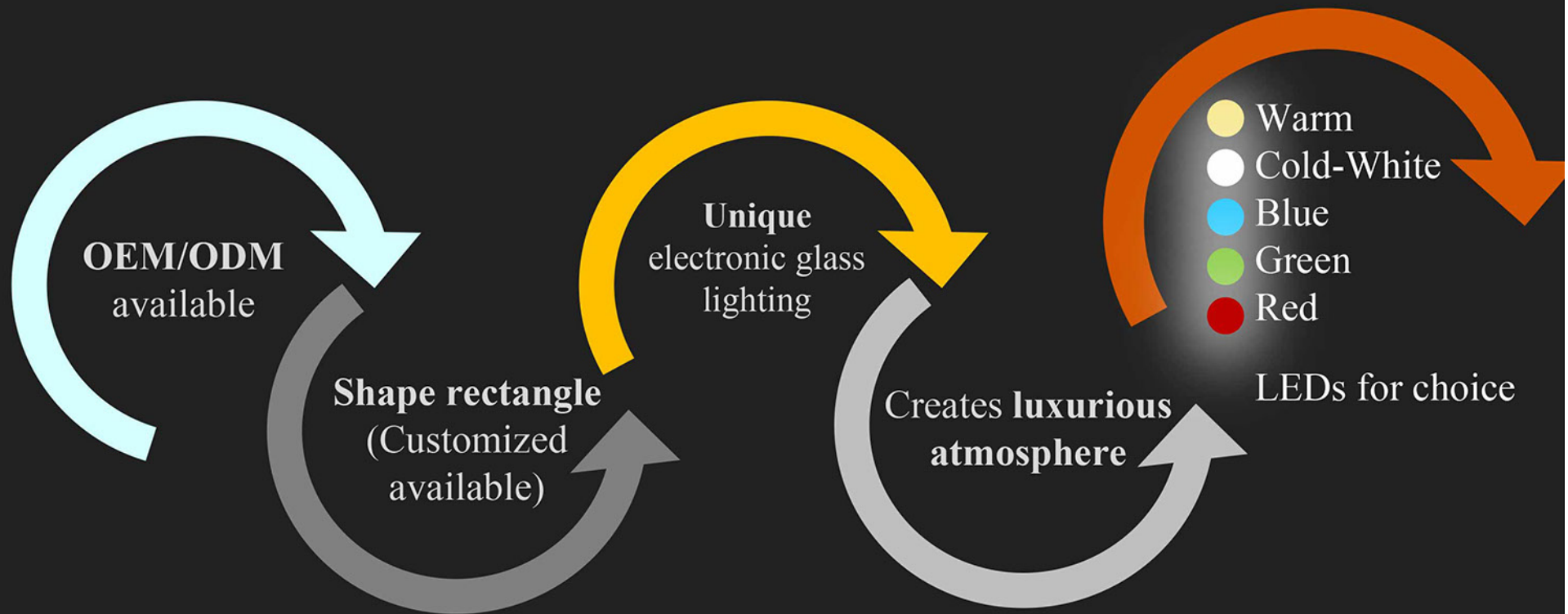


Transparent glass panels combine with gorgeous diamond-like LED





# Roxyglass



# Light Up Your Life

The light of hope, light up the dream.  
The light of star, light up the night sky.  
Roxyglass Lighting Glass, Light Up Your Life.



# Roxyglass



## Jumeirah Cinema

in Dubai, UAE



It appears in **different colors** when viewing at **various angles**.

---

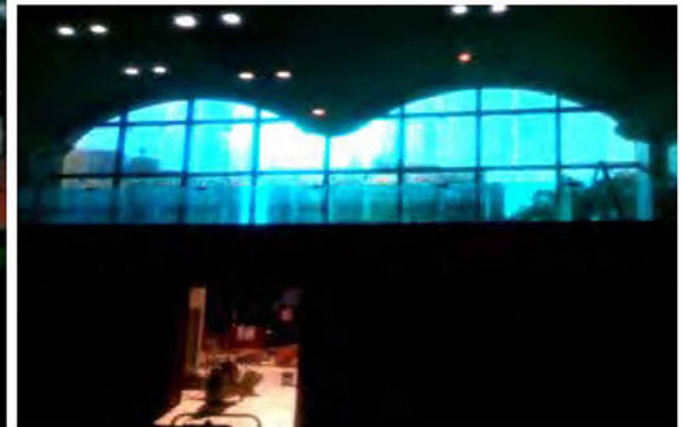


# Roxyglass



◀ outside

▼ inside



It appears in **different colors** when viewing at **various angles**.

---

# Roxyglass



◀ outside

▼ inside



---

Inside view is **transparent**, outside view is **golden**.

# Roxyglass

Created for luxurious out-door applications, exhibiting reflective various patterns and color.

It has a protean effect when viewed from different angles.

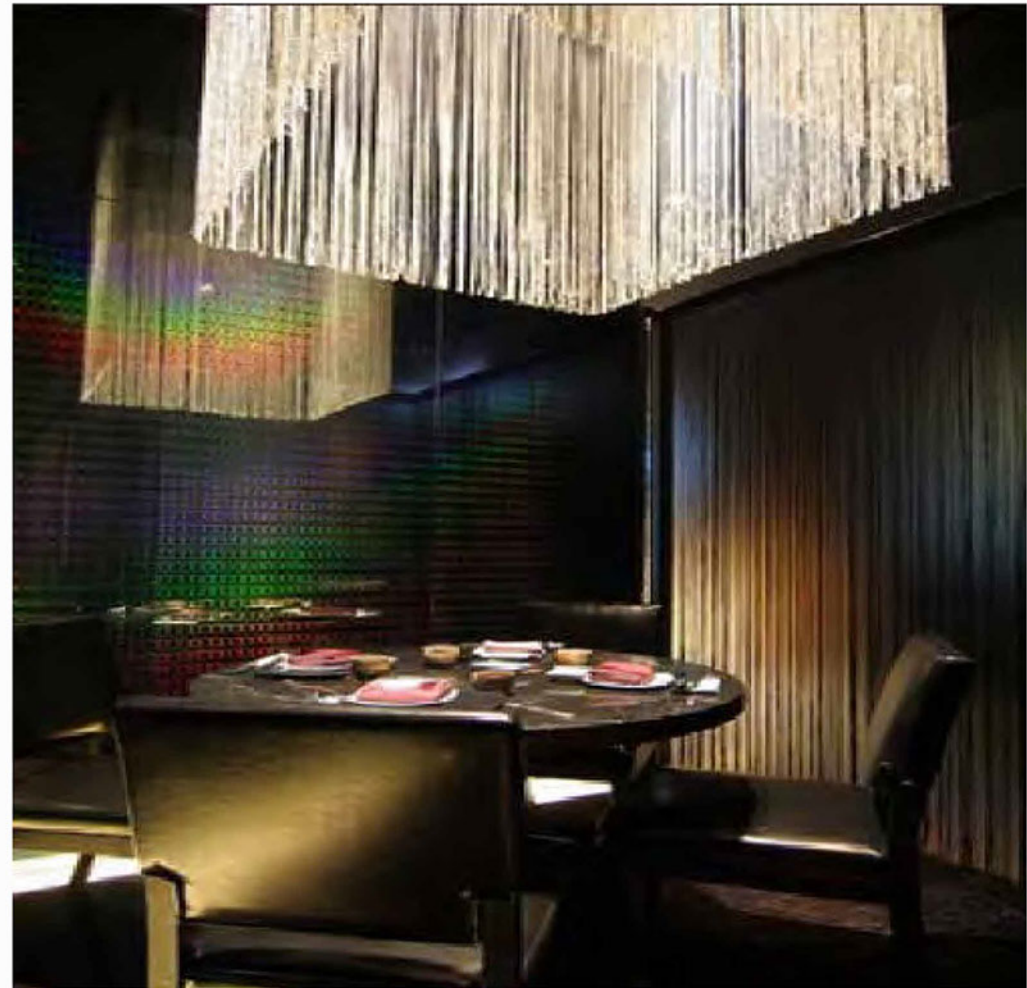
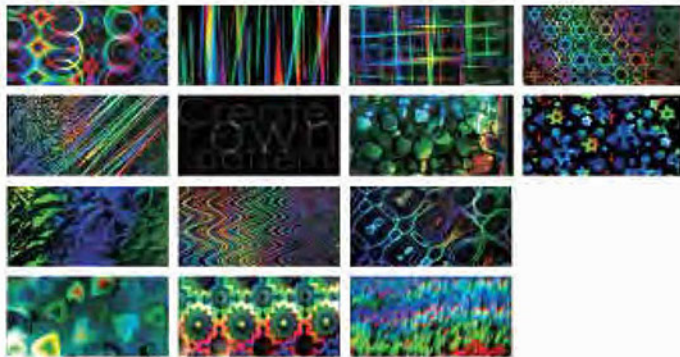




# Roxyglass

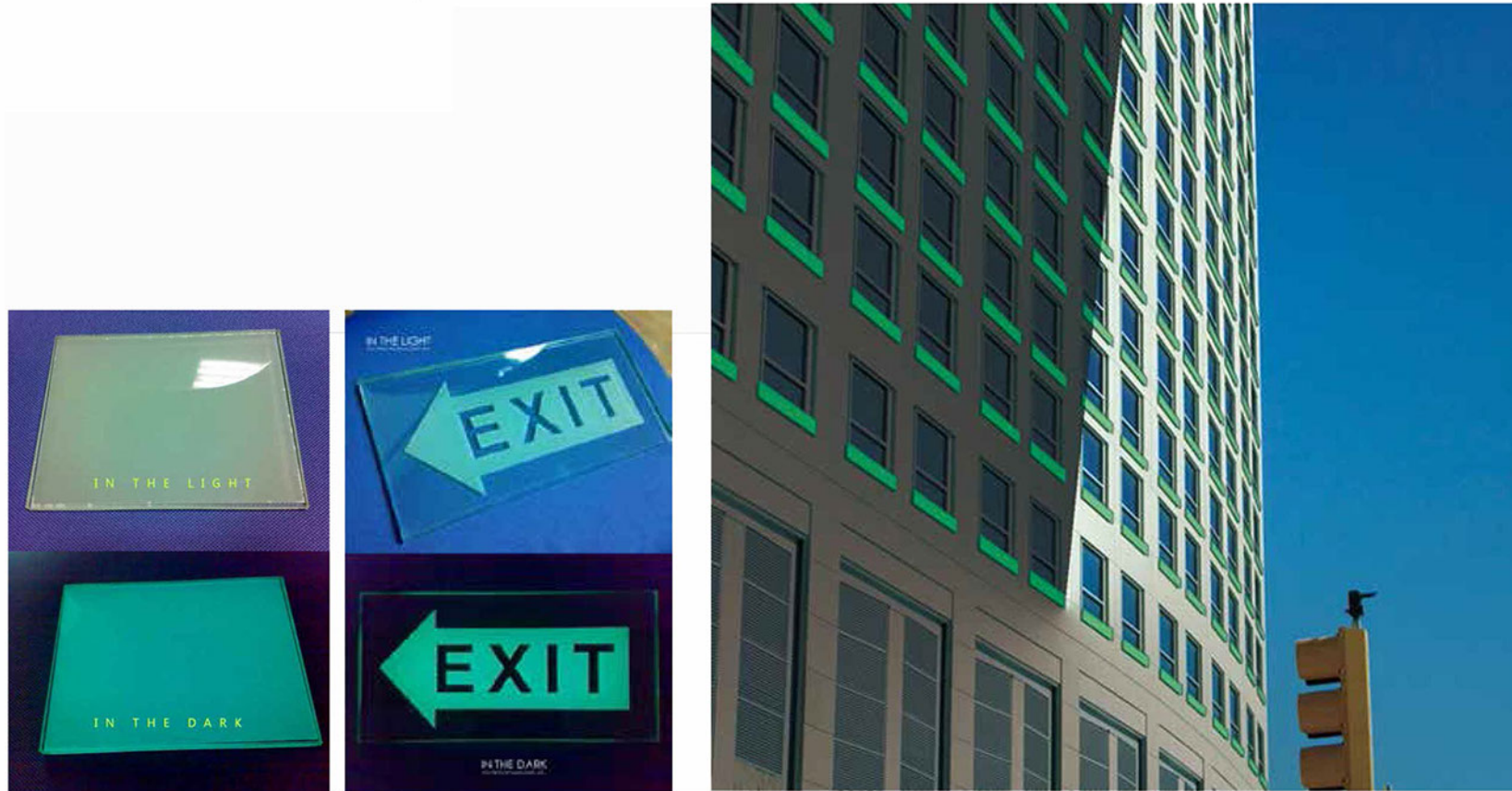
---

This unique glass is embedded with holographic films, providing variety of colorful, attractive, eye-catching patterns.



# Roxyglass

---



**This glass has unique glow in the dark features, allowing it to serve as a light source in the event of a power outage. It is a novel application of using luminous technology in glass.**

Thank  
You !

**Roxyglass**  
**Privacy Glass**